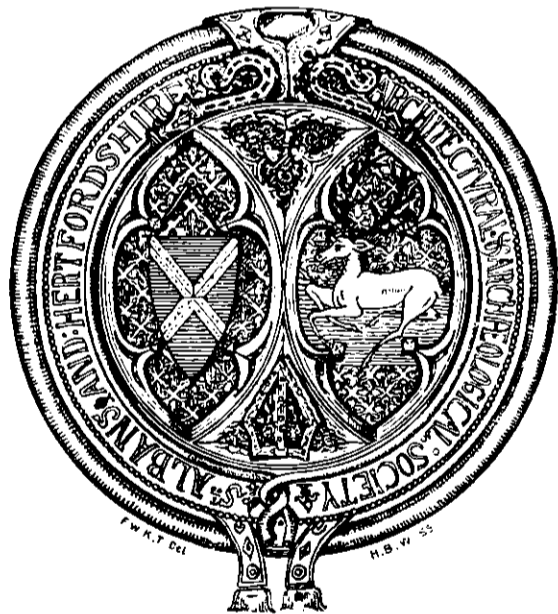


St. Albans and Hertfordshire
Architectural
AND
Archæological Society.

TRANSACTIONS
1924.



St. Albans :

PRINTED BY GIBBS AND BAMFORTH, LTD., MARKET PLACE.

1924.

BC.6611/TAH

553

5

43620

CONTENTS.

	PAGE
List of Officers and Council, 1920	4
List of Officers and Council, 1921	5
List of Officers and Council, 1922	6
List of Officers and Council, 1923	7
List of Officers and Council, 1924	8
List of Members, 1924	9
Report of the Council, 1923	12
Report of the Council, 1924	14
Report of the Hon. Secretary, 1924	16
Report of the Hon. Librarian, 1924	20
Charles Henry Ashdown	22
Herbert Robert Wilton-Hall	23
The Infirmary of St. Albans Abbey. By William Page, F.S.A.	24
The Ivory Fragment from Orchard House. By Sir Edgar Wigram, Bart., B.A., A.R.I.B.A.	29
The Chapter House at St. Albans. By Sir Edgar Wigram, Bart., B.A., A.R.I.B.A.	35
A 15th Century Manuscript in St. Albans Abbey. By Gerald R. Owst, M.A., Ph. D.	43
Notes on Rickmansworth. By Tom Bevan	60
The Bacon Monument. By Sir Edgar Wigram, Bart., B.A., A.R.I.B.A.	69
The Schoolmaster Printer of St. Albans. By Charles H. Ashdown, F.R.G.S., F.C.S.	76
Statement of Accounts to December 31st, 1923	80

THE ST. ALBANS AND HERTFORDSHIRE
ARCHITECTURAL AND ARCHÆOLOGICAL SOCIETY.

FOUNDED 1845.

OFFICERS AND COUNCIL FOR 1920.

PATRONS.

THE MOST HON. THE MARQUESS OF SALISBURY, P.C.
THE RIGHT HON. THE EARL OF VERULAM.

PRESIDENT.

VICTOR T. HODGSON, Esq., F.S.A.

VICE-PRESIDENTS.

E. N. WIX, Esq., M.A.
WILLIAM PAGE, Esq., F.S.A.
THE VEN. ARCHDEACON THE HON. KENNETH F. GIBBS, M.A.
H. J. TOULMIN, Esq., J.P.

COUNCIL.

MISS E. ARCHIBALD, M.A.	THE REV. CANON G. H. P. GLOSSOP, M.A.
MRS. BROADBENT.	R. H. HOOKER, Esq.
A. W. CARD, Esq.	C. E. JONES, Esq.
MISS CURTIS.	H. O. MINTY, Esq., M.A.
MRS. DEBENHAM.	A. DUNBAR SMITH, Esq.
THE REV. G. M. EDMONDS, M.A.	
THE REV. CANON E. J. GALLOP, M.A.	

HONORARY SECRETARY AND TREASURER.

C. H. ASHDOWN, Esq., F.R.G.S., F.C.S.

HONORARY EXCURSION SECRETARY.

MRS. C. H. ASHDOWN.

HONORARY AUDITOR.

E. H. LIPSCOMB, Esq., M.B.

HONORARY LIBRARIAN.

H. R. WILTON HALL, Esq.

HONORARY ASSISTANT LIBRARIAN AND CURATOR.

G. EBSWORTH BULLEN, Esq.

DISTRICT CORRESPONDENTS.

Hertford—R. T. ANDREWS, Esq.
Watford—E. W. NIMMY, Esq.

Note.—Owing to the War the Officers and Council for 1915, whose names are given in the last volume of Transactions, served during 1916, 1917, 1918 and 1919.

THE ST. ALBANS AND HERTFORDSHIRE
ARCHITECTURAL AND ARCHÆOLOGICAL SOCIETY.

FOUNDED 1845.

OFFICERS AND COUNCIL FOR 1921.

PATRONS.

THE MOST HON. THE MARQUESS OF SALISBURY, P.C.
THE RIGHT HON. THE EARL OF VERULAM.
THE RIGHT REV. THE LORD BISHOP OF ST. ALBANS, D.D.

PRESIDENT.

THE REV. CANON E. J. GALLOP, M.A.

VICE-PRESIDENTS.

E. N. WIN, Esq., M.A.
WILLIAM PAGE, Esq., V.P.S.A.
THE VEN. ARCHDEACON THE HON. KENNETH F. GIBBS, M.A.
H. J. TOULMIN, Esq., J.P.
VICTOR T. HODGSON, Esq., F.S.A., Past Pres.
THE VERY REV. THE DEAN OF ST. ALBANS, M.A.
SIR EDGAR T. A. WIGRAM, Bart., B.A., A.R.I.B.A.
A. J. B. WACE, Esq., M.A.
THE REV. CANON G. H. P. GLOSSOP, M.A.

COUNCIL.

MISS E. ARCHIBALD, M.A.	THE REV. G. M. EDMONDS, M.A.
MRS. BROADBENT.	C. E. JONES, Esq.
A. W. CARD, Esq.	MRS. NETTLETON.
MISS CURTIS.	MRS. ROSE.
A. J. DAVID, Esq., K.C., F.R.G.S.	E. R. STRAKER, Esq.
THE REV. J. H. DU BOULAY, M.A.	MISS TODD.

HONORARY SECRETARY AND TREASURER.

C. H. ASHDOWN, Esq., F.R.G.S., F.C.S.

HONORARY EXCURSION SECRETARY.

MRS. C. H. ASHDOWN.

HONORARY AUDITOR.

E. H. LIPSCOMB, Esq., M.B.

DISTRICT CORRESPONDENTS.

Hertford—R. T. ANDREWS, Esq.
Watford—E. W. NIMMY, Esq.
Welwyn—THE REV. SHEPLEY S. SMITH, M.A.

THE ST. ALBANS AND HERTFORDSHIRE
ARCHITECTURAL AND ARCHÆOLOGICAL SOCIETY.

FOUNDED 1845.

OFFICERS AND COUNCIL FOR 1922.

PATRONS.

THE MOST HON. THE MARQUESS OF SALISBURY, P.C.
THE RIGHT HON. THE EARL OF VERULAM.
THE RIGHT REV. THE LORD BISHOP OF ST. ALBANS, D.D.

PRESIDENT.

THE REV. CANON E. J. GALLOP, M.A.

VICE-PRESIDENTS.

E. N. WIX, Esq., M.A.
WILLIAM PAGE, Esq., V.P.S.A.
THE VEN. ARCHDEACON THE HON. KENNETH F. GIBBS, M.A.
H. J. TOULMIN, Esq., J.P.
VICTOR T. HODGSON, Esq., F.S.A., Past Pres.
THE VERY REV. THE DEAN OF ST. ALBANS, D.D.
SIR EDGAR T. A. WIGRAM, Bart., B.A., A.R.I.B.A.
A. J. B. WACE, Esq., M.A.
THE REV. CANON G. H. P. GLOSSOP, M.A.
CHARLES E. JONES, Esq.
ARTHUR FAULKNER, Esq., F.R.G.S.

COUNCIL.

MISS CURTIS.	MRS. NETTLETON.
A. J. DAVID, Esq., K.C., F.R.G.S.	F. NORMAN RECKITT, Esq., M.A.
MRS. DEBENHAM.	MRS. ROSE.
L. GARBUTT, Esq., M.A., F.C.S.	T. SEATON, Esq.
MISS JOPLING.	E. R. STRAKER, Esq.
E. N. KING, Esq.	F. M. WHITING, Esq.

HONORARY SECRETARY AND TREASURER.

C. H. ASHDOWN, Esq., F.R.G.S., F.C.S.

HONORARY EXCURSION SECRETARY.

MRS. C. H. ASHDOWN.

HONORARY AUDITOR.

E. H. LIPSCOMB, Esq., M.B.

HONORARY LANTERNIST.

G. A. JONES, Esq.

DISTRICT CORRESPONDENTS.

Hertford—R. T. ANDREWS, Esq.
Watford—E. W. NIMMY, Esq.
Welwyn—H. W. JONES, Esq.

THE ST. ALBANS AND HERTFORDSHIRE
ARCHITECTURAL AND ARCHÆOLOGICAL SOCIETY.

FOUNDED 1845.

OFFICERS AND COUNCIL FOR 1923.

PATRONS.

THE MOST HON. THE MARQUESS OF SALISBURY, P.C.
THE RIGHT HON. THE EARL OF VERULAM.
THE RIGHT REV. THE LORD BISHOP OF ST. ALBANS, D.D.

PRESIDENT.

THE REV. CANON E. J. GALLOP, M.A.

VICE-PRESIDENTS.

ERNEST N. WIX, Esq., M.A.
WILLIAM PAGE, Esq., V.P.S.A.
THE VEN. ARCHDEACON THE HON. KENNETH F. GIBBS, M.A.
H. J. TOULMIN, Esq., J.P.
VICTOR T. HODGSON, Esq., F.S.A., Past Pres.
THE VERY REV. THE DEAN OF ST. ALBANS, D.D.
SIR EDGAR T. A. WIGRAM, Bart., B.A., A.R.I.B.A.
A. J. B. WACE, Esq., M.A.
THE REV. CANON G. H. P. GLOSSOP, M.A.
CHARLES E. JONES, Esq.

COUNCIL.

A. W. CARD, Esq.	E. N. KING, Esq.
MRS. DEBENHAM.	H. O. MINTY, Esq., M.A.
L. GARBUTT, Esq., M.A., F.C.S.	MRS. ROSE.
MISS A. M. HEALE.	T. SEATON, Esq.
R. H. HOOKER, Esq.	C. D. STEEL, Esq.
MISS JOPLING.	F. M. WHITING, Esq.

DIRECTOR.

SIR EDGAR T. A. WIGRAM, Bart., B.A., A.R.I.B.A.

HONORARY SECRETARY.

MRS. C. H. ASHDOWN.

HONORARY TREASURER.

F. M. WHITING, Esq.

HONORARY LIBRARIAN.

MISS JOPLING.

HONORARY AUDITOR.

E. H. LIPSCOMB, Esq., M.B.

HONORARY LANTERNIST.

G. A. JONES, Esq.

DISTRICT CORRESPONDENTS.

Hertford—R. T. ANDREWS, Esq.
Watford—E. W. NIMMY, Esq.
Welwyn—H. W. JONES, Esq.

THE ST. ALBANS AND HERTFORDSHIRE
ARCHITECTURAL AND ARCHÆOLOGICAL SOCIETY.

FOUNDED 1845.

OFFICERS AND COUNCIL FOR 1924.

PATRONS.

THE MOST HON. THE MARQUESS OF SALISBURY, P.C.
THE RIGHT HON. THE EARL OF VERULAM.
THE RIGHT REV. THE LORD BISHOP OF ST. ALBANS, D.D.

PRESIDENT.

THE REV. CANON E. J. GALLOP, M.A.

VICE-PRESIDENTS.

ERNEST N. WIN, Esq., M.A.
WILLIAM PAGE, Esq., V.P.S.A.
THE VEN. ARCHDEACON THE HON. KENNETH F. GIBBS, M.A.
H. J. TOULMIN, Esq., J.P.
VICTOR T. HODGSON, Esq., F.S.A., Past Pres.
THE VERY REV. THE DEAN OF ST. ALBANS, D.D.
SIR EDGAR T. A. WIGRAM, Bart., B.A., A.R.I.B.A.
A. J. B. WACE, Esq., M.A.
THE REV. CANON G. H. P. GLOSSOP, M.A.
CHARLES E. JONES, Esq.

COUNCIL.

W. H. BRIGHTMAN, Esq.	R. H. HOOKER, Esq.
A. W. CARD, Esq.	MISS A. JOPLING.
MISS F. CHAPMAN.	H. O. MINTY, Esq., M.A.
MISS F. L. CURTIS.	C. D. STEEL, Esq.
MRS. DEBENHAM.	E. R. STRAKER, Esq.
MISS A. M. HEALE.	E. WOOLLEY, Esq., F.S.A.

DIRECTOR.

SIR EDGAR T. A. WIGRAM, Bart., B.A., A.R.I.B.A.

HONORARY SECRETARY.

MRS. C. H. ASHDOWN.

HONORARY TREASURER.

F. M. WHITING, Esq.

HONORARY LIBRARIAN.

MISS JOPLING.

HONORARY AUDITOR.

E. H. LIPSCOMB, Esq., M.B.

HONORARY LANTERNIST.

G. A. JONES, Esq.

DISTRICT CORRESPONDENTS.

Hertford—R. T. ANDREWS, Esq.
Watford—E. W. NIMMY, Esq.
Welwyn—H. W. JONES, Esq.

THE ST. ALBANS AND HERTFORDSHIRE ARCHITECTURAL AND ARCHÆOLOGICAL SOCIETY.

LIST OF MEMBERS (January, 1924).

Marked * are Honorary Members.

„ § „ Life „ „

- | | |
|---|--|
| <p>Adecock, Miss, Wilfords, Bricket Road, St. Albans.</p> <p>Anderson, A. Whitford, A.R.I.B.A., 28, High Street, Watford.</p> <p>Anderson, Mrs., Headon Clump, Verulam Road, St. Albans.</p> <p>Andrew, Miss, South Lodge, Cunningham Hill, St. Albans.</p> <p>§ Andrews, R. T., 25, Castle Street, Hertford.</p> <p>§ Andrews, W. F., 27, West Street, Hertford.</p> <p>Archibald, Miss, M.A., The High School, St. Albans.</p> <p>Arundel, M. H., Oakhill, 8, Gombards, St. Albans.</p> <p>* Ashdown, Mrs. C. H., St. Stephen's, St. Albans.</p> <p>Atkin, Miss, Caerleon, Ridgmont Road, St. Albans.</p> <p>Bailey, Miss, Newlands, Townsend Avenue, St. Albans.</p> <p>Bailey, Miss A., Newlands, Townsend Avenue, St. Albans.</p> <p>Bathurst, Miss, Berners, Marlborough Road, St. Albans.</p> <p>Bayard, Miss, Leslie Lodge, Avenue Road, St. Albans.</p> <p>Bickerton, W., F.Z.S., Kingsmuir, 21, Oxhey Road, Watford.</p> <p>* Bicknell, The Rev. C. V., M.A., 36, Springfield Road, St. Leonards-on-Sea.</p> <p>Bolton, G. R., Public Library, Watford.</p> <p>Brightman, W. H., Cintra, Sandpit Lane, St. Albans.</p> <p>Brightman, Mrs., Cintra, Sandpit Lane, St. Albans.</p> <p>* Browne, the Rev. V., Nuffield Rectory, Henley-on-Thames.</p> <p>Buck, F. S., Bembridge, Avenue Road, St. Albans.</p> <p>Burney, Miss, Duncroft, Jennings Road, St. Albans.</p> <p>Card, A. W., Borogarth, St. Peter's Street, St. Albans.</p> <p>Card, Mrs., Borogarth, St. Peter's Street, St. Albans.</p> | <p>Card, Miss, Borogarth, St. Peter's Street, St. Albans.</p> <p>Carlile, Col. Sir Hildred, Bart., C.B.E., Ponsbourne Park, near Hertford.</p> <p>Chapman, Miss F., Home, Mile House Lane, St. Albans.</p> <p>Cooper, Miss, Caerleon, Ridgmont Road, St. Albans.</p> <p>Coutts, Miss, Kingsbury Knoll, Verulam Road, St. Albans.</p> <p>Covernton, J. G., Gray Gables, Townsend Avenue, St. Albans.</p> <p>Curtis, Miss, Fairshot Court, near St. Albans.</p> <p>Dangerfield, Mrs., Westcott, Battlefield Road, St. Albans.</p> <p>Debenham, E. P., Weyvercourt, Avenue Road, St. Albans.</p> <p>Debenham, Mrs., Weyvercourt, Avenue Road, St. Albans.</p> <p>Dewse, G., Strathalan, Mile House Lane, St. Albans.</p> <p>Dewse, Mrs., Strathalan, Mile House Lane, St. Albans.</p> <p>§ Dixon, the Rev. T. G., M.A., The Hall, Holton-le-Moor, Lincoln.</p> <p>Du Boulay, the Rev. J. H., M.A., Berisal, Avenue Road, St. Albans.</p> <p>Du Cane, Miss, Arran, Avenue Road, St. Albans.</p> <p>Dumville, Miss, 2, Belmont Hill, St. Albans.</p> <p>Elliott, Miss, Brinsley, London Road, St. Albans.</p> <p>§ Evans, Lewis, F.S.A., Salcombe, Devonshire.</p> <p>Faulconer, Mrs., Nottlers, Bricket Wood.</p> <p>Faulkner, A. E., 26, Clarence Road, St. Albans.</p> <p>Faulkner, Mrs., 26, Clarence Road, St. Albans.</p> <p>Fossey, F. T., The Poplars, 139, High Street, Dunstable.</p> <p>Fox, R. F., Southleigh, Stevenage.</p> <p>Fox, Mrs., Southleigh, Stevenage.</p> <p>Furse, Mrs., Verulam House, St. Albans.</p> |
|---|--|

List of Members (January, 1924).—Continued.

- Gallop, the Rev. Canon E. J., M.A., Denford, Avenue Road, St. Albans.
 Garbutt, L., M.A., F.C.S., 43, Victoria Street, St. Albans.
 §Gibbs, the Ven. Archdeacon the Hon. Kenneth F., M.A., Hatfield.
 Glossop, the Rev. Canon G. H. P., M.A., Romeland House, St. Albans.
 Godfrey-Faussett, Mrs., Arran, Avenue Road, St. Albans.
 Green, W. S., J.P., St. Stephen's House, St. Albans.
 §Griffith, A. F., 3, Evelyn Terrace, Brighton.
 Grimston, the Rt. Hon. the Viscountess, Gorhambury, St. Albans.
 Hake, Miss, Berisal, Avenue Road, St. Albans.
 *Hall, H. R. Wilton, 16, Walton Street, St. Albans.
 Hartley, Mrs., Middlewych, Church Crescent, St. Albans.
 §Hawkins, the Rev. Canon Sir J. C., Bart., Kelston Lodge, 72, Banbury Road, Oxford.
 Heale, Miss A. M., Wayside, Heath Road, St. Albans.
 Heale, Miss H. A., Wayside, Heath Road, St. Albans.
 Heale, Miss M. H., Wayside, Heath Road, St. Albans.
 Herbert, Mrs., Elmslea, Beaconsfield Road, St. Albans.
 Hill, A., Elmhurst, Hatfield Road, St. Albans.
 Hill, Mrs., Elmhurst, Hatfield Road, St. Albans.
 Hill, R. E., 5, Fishpool Street, St. Albans.
 Hill, Mrs., 5, Fishpool Street, St. Albans.
 Hitchcock, Mrs., Gallizur, Beaumont Avenue, St. Albans.
 §Hodgson, Victor T., F.S.A., Cuilcheanna, Onich, Inverness-shire.
 Hood, Dr. Thomas, Chester Lodge, York Road, St. Albans.
 Hooker, R. H., Boroughfield, Bricket Road, St. Albans.
 Howard, Mrs., The Knoll, Verulam Road, St. Albans.
 Hull, W., 34, New Kent Road, St. Albans.
 Innes, J. W., 42, Clarence Road, St. Albans.
 Jefferies, Mrs., 21, Beaconsfield Road, St. Albans.
 Jones, C. E., York Lodge, St. Peter's Street, St. Albans.
 Jones, Mrs., York Lodge, St. Peter's Street, St. Albans.
 Jones, Miss, York Lodge, St. Peter's Street, St. Albans.
 Jones, G. A., York Lodge, St. Peter's Street, St. Albans.
 Jones, H. W., The Red House, Welwyn.
 Jones, Mrs., The Red House, Welwyn.
 Jones, E. A., The Red House, Welwyn.
 Jopling, Miss, Hollydale, Russell Avenue, St. Albans.
 §Kennedy, the Rev. J., M.A., Fernhill, Charmouth, Dorset.
 Kent, Miss, Gloucester House, London Road, St. Albans.
 §Keyser, C. E., F.S.A., Aldermaston Court, Reading.
 King, E. N., The Corner House, Clarence Road, St. Albans.
 King, Mrs., The Corner House, Clarence Road, St. Albans.
 Kitto, J., Rothesay, Lemsford Road, St. Albans.
 *Kitton, Mrs., St. Albans Cottage, Willington, near Bedford.
 Lane, Miss, Addiscombe Lodge, Harpenden Road, St. Albans.
 Lee, Miss, Bracadale, Avenue Road, St. Albans.
 §Lipscomb, E. H., M.B., Holywell Hill, St. Albans.
 *Lloyd, Mrs. Ridgway, Upper Lattimore Road, St. Albans.
 Macpherson, W., 41, Clarence Road, St. Albans.
 Magrath, Miss, Haileybury Cottage, Upton Avenue, St. Albans.
 Maygrove, Miss, Abbey Mill House, St. Albans.
 Middleton, Mrs., Orlands, St. Stephen's, St. Albans.
 Middleton, Miss E., Orlands, St. Stephen's, St. Albans.
 Minty, H. O., M.A., Nessfield, York Road, St. Albans.
 Nelson, Mrs., Wilfords, Bricket Road, St. Albans.
 Nettleton, Mrs., Sunnymead, Fortis Green, East Finchley.
 Nicholson, A. J., Athalls, Hall Place Gardens, St. Albans.
 Osborne, Mrs., Invergeldie, St. Stephen's, St. Albans.
 Owst, R. C., Clare Lodge, Battlefield Road, St. Albans.
 Owst, Mrs., Clare Lodge, Battlefield Road, St. Albans.
 §Page, W., F.S.A., Ashmere Croft, Middleton, near Bognor.
 Pearson, C. H., The Elms, Upper Marlborough Road, St. Albans.
 Pearson, Mrs., The Elms, Upper Marlborough Road, St. Albans.

List of Members (January, 1924).—Continued.

- | | |
|---|---|
| Phillips, A. F., J.P., 64, Evelyn Gardens, South Kensington. | Steel, Mrs., Holly Lodge, Verulam Road, St. Albans. |
| Phillips, E., St. Stephen's Hill House, St. Albans. | Stievenard, Miss, Francona, Alma Road, St. Albans. |
| Phillips, Mrs., St. Stephen's Hill House, St. Albans. | Straker, E. R., Chevington, Clarence Road, St. Albans. |
| *Puddicombe, W. N., 1, Marlborough Road, St. Albans. | Straker, Mrs., Chevington, Clarence Road, St. Albans. |
| Reynolds, L. Baillie, Holmhurst, Fishpool Street, St. Albans. | §Toulmin, H. J., J.P., Branch Road, St. Albans. |
| Reynolds, Mrs., Holmhurst, Fishpool Street, St. Albans. | Townson, Mrs., Burston Manor, St. Stephen's, St. Albans. |
| Rose, E. M., 24, Clarence Road, St. Albans. | Frower, Mrs., Widcombe, Hillside Road, St. Albans. |
| Rose, Mrs., 24, Clarence Road, St. Albans. | Tyler, Mrs., Berrystead, St. Peter's Road, St. Albans. |
| Rutter, E. V., Wintern Lodge, Clarence Road, St. Albans. | Wace, Mrs., Leslie Lodge, Avenue Road, St. Albans. |
| Rutter, Mrs., Wintern Lodge, Clarence Road, St. Albans. | Wace, A. J. B., M.A., Leslie Lodge, Avenue Road, St. Albans. |
| Saint Albans, the Right Rev. the Lord Bishop of, D.D., Verulam House, St. Albans. | White, Miss, Elmsleigh, Bricket Road, St. Albans. |
| Saint Albans, the Very Rev. the Dean of, D.D., The Deanery, St. Albans. | Whiting, F. M., Holmrook, Clarence Road, St. Albans. |
| Salisbury, the Most Hon. the Marquess of, P.C., Hatfield. | Whiting, Mrs., Holmrook, Clarence Road, St. Albans. |
| Salisbury, E., 5, Arden Grove, Harpenden. | Wigglesworth, Mrs., Dirleton House, Battlefield Road, St. Albans. |
| Scott, Mrs., Chesholm, Harpenden Road, St. Albans. | Wigram, Sir Edgar T. A., Bart., B.A., A.R.I.B.A., Watling House, St. Stephen's, St. Albans. |
| Seaton, T., Spencer House, Verulam Road, St. Albans. | Wilkins, H. G., Bancroft, Clarence Road, St. Albans. |
| Seaton, Miss E., Spencer House, Verulam Road, St. Albans. | Wilkins, Mrs., Bancroft, Clarence Road, St. Albans. |
| Secker, Mrs., Whitethorn, Beaconsfield Road, St. Albans. | Wix, E. N., M.A., Holywell House, St. Albans. |
| Seebohm, Miss, Dilwyn, Manor Road, St. Albans. | Woodman, T. Foster, Whitethorn, Beaconsfield Road, St. Albans. |
| Sewell, Mrs., Wolverdene, Battlefield Road, St. Albans. | Woolley, E., F. S.A., Collingworth, Lemsford Road, St. Albans. |
| Slight, Mrs., Rodney, Belmont Hill, St. Albans. | Worsam, Mrs., St. Faith's, Battlefield Road, St. Albans. |
| Steel, C. D., Holly Lodge, Verulam Road, St. Albans. | |

Report of the Council, February, 1923.

During the past year our Society has sustained a great loss in the death of Mr. Charles Henry Ashdown, for many years our Honorary Secretary. He served us with much zeal, manifested great devotion to our interests, and directed our activities with great ability. The Council desires to place on record its most grateful appreciation of Mr. Ashdown's valuable work.

Sir Edgar Wigram has very kindly consented to be proposed as the Director of our Society; he asks that a few members may be associated with him in carrying out the work of that office, if he is elected.

Mrs. Ashdown is very kindly willing to act as Honorary Secretary, if elected to that office, and in that capacity to organise the Summer Excursions.

We have to thank Mr. F. Norman Reckitt for having taken over the Treasurership in the place of the late Mr. Ashdown, and Miss Jopling for having filled the vacant post of Librarian.

With deep regret we report the loss by death of one of our Vice-Presidents, Mr. Arthur Faulkner, who showed much interest in our Society, and of whose kindness and geniality we shall long cherish a grateful remembrance.

Last year our late Honorary Secretary reported to the Council that the Bacon Monument in St. Michael's Church was in danger owing to decay in the wall in which it is fixed, and that he had informed the Incorporated Bacon Society of this. He and Sir Edgar Wigram prepared a Report upon the condition of the Monument, and obtained an estimate for the necessary repair, the cost of which is not likely to exceed £70. Miss Leith, a member of the Council of the Bacon Society, has collected over £50 from members of that Society towards the cost of this work, and your Council proposes to allocate a sum not exceeding £20 from the funds of this Society for the same purpose.

The consent of the Vicar of St. Michael's and Lord Verulam, the patron of the Living, having been given, the matter is now before the Diocesan Advisory Committee, and when their approval has been obtained a faculty will be applied for that the work of restoration may be put in hand.

Since our last Annual Meeting the following Lectures have been given, viz. :—

On Nov. 14th, 1922.—“Lindisfarne and the Farne Islands,”
By the Rev. E. E. C. Elford, M.A.

On Nov. 28th, 1922.—“Libraries of the Mediæval Black Friars.”
By the Rev. Father John Baptist Reeve, O.P.

On Dec. 12th, 1922.—“Mouldings.”
By Sir Edgar T. A. Wigram, Bart., B.A., A.R.I.B.A.

On Jan. 9th, 1923.—“Recent Explorations in Mycenæ.”

By Mr. A. J. B. Wace, M.A.

On Feb. 6th, 1923.—“The Life and Times of Francis St. Alban.”

By Miss A. A. Leith.

On Feb. 20th, 1923.—“The English Pulpit in the Middle Ages.”

By Mr. Gerald R. Owst, M.A.

Our present Lecture Course will be concluded on March 20th by a Lecture on

“Old Tavern Signs and their Origin.”

By Mr. F. Norman Reckitt, M.A.

During last year's Excursion Season excursions were made to :
Someries Castle, Ayot St. Lawrence and Ayot St. Peter, on
May 9th.

Waltham Cross, Waltham Abbey and Rye House, on May
30th.

Hatfield House, the Vineyard and the Banqueting Hall, on
June 13th.

The Langleys and Hemel Hempstead, on June 20th.

Windsor Castle, on July 11th.

Luton and Ashwell, on September 12th.

Bengeo and Welwyn, on September 26th.

Lambeth Palace, on November 25th.

During the past year 14 members were elected, and we lost 18 members by death, resignation, or removal from the neighbourhood. Our Roll now contains the names of :—

13 Life Members,

7 Honorary Members,

134 Ordinary Members,

making a total of 154.

The Council hopes that members will make an effort to increase the number on the Roll.

Signed on behalf of the Council,

E. J. GALLOP,

Chairman.

Report of the Council, February, 1924.

The Society has been fortunate in retaining the services of all its officials during the past year, except that Mr. F. Norman Reckitt was compelled to resign the Treasurership in May in consequence of his departure from St. Albans.

Mr. F. M. Whiting was elected Hon. Treasurer in his room on June 1st, 1923, and the thanks of the Society are due to him for his kindness in undertaking the office.

It was resolved that the Society should erect a Memorial Tablet in St. Stephen's Church in memory of their late Hon. Secretary, Mr. C. H. Ashdown. The Tablet has been ordered, and a Faculty for its erection has been obtained.*

The restoration of the Monument to Francis Bacon in St. Michael's Church has been completed. The cost of this work will not greatly exceed the sum which has been already subscribed by the Ladies' Guild of Francis St. Alban.

The following Lectures have been given before the Society during the past year :—

On Oct. 29th, 1923.—“ Some Ancient Sites in Greece.”
By Sir Edgar Wigram, Bart.

On Nov. 12th, 1923.—“ The Passing of the Lord of the Manor.”
By Mr. F. Cookesley Slater.

On Nov. 26th, 1923.—“ Staffa and Iona.”
By the Rev. E. E. C. Elford, M.A.

On Jan. 21st, 1924.—“ The Growth of Monasticism.”
By Sir Edgar Wigram, Bart.

On Feb. 4th, 1924.—“ The De la Mare Brass, St. Albans ; and Some Lincolnshire and Nottinghamshire Easter Sepulchres.”
By Mr. Ernest Woolley, F.S.A.

On Feb. 11th, 1924.—“ A Mediæval Anthology ” (the Vernon M.S.)
By Father J. B. Reeves, O.P.,
and arrangements have been made for further lectures as under :—

On Feb. 18th, 1924.—“ How to study an old English Church,”
By Sir Edgar Wigram, Bart.

*It has since been erected, and was unveiled by the President on March 15th, 1924.

On Feb. 25th, 1924.—“ A Fifteenth Century Manuscript in St. Albans Cathedral, and its sketches of contemporary life.”

By Mr. Gerald R. Owst, M.A.

On March 3rd, 1924.—“ Rickmansworth and National History.”

By Mr. Tom Bevan.

The following Excursions were made by the Society during the Summer months in 1923 :—

Digswell Church, and the Red House, Welwyn, on May 30th.

The Penn District, Jourdan's, and Sarratt Church, on June 22nd.

Rickmansworth and Moor Park, on July 4th.

Eastwick and Sawbridgeworth, on July 25th.

Standon and Much Hadham, on Sept. 12th.

Twenty-four new members were elected to the Society during the past year, and twenty-four were lost by death, removal from the neighbourhood, or resignation.

There are now upon the Society's Roll the names of

13 Life Members,

7 Honorary Members, and

134 Ordinary Members,

a total of 154.

Signed on behalf of the Council,

EDGAR WIGRAM,

Director.

Honorary Secretary's Report, February, 1924.

In resuming publication of Transactions after a long interval, due to difficulties caused by the War, it is a pleasure to record that the activities of the Society have been well maintained during that time. Many lectures have been given, many excursions held, ancient monuments in the County have been preserved and restored, and excavations on historical sites have been made.

In the interval between those recorded in the previous volume of Transactions, and the President's report of February, 1923, the following lectures were given before the Society :—

Dec. 15th, 1913.—“ Jaunts upon the border of East Herts with bicycle and camera.”

By Mr. Maberly Phillips, F.S.A.

Jan. 19th, 1914.—“ Berkhamsted Castle : with reference to other Hertfordshire Castles.”

By Mr. C. H. Ashdown, F.R.G.S., F.C.S.

Feb. 10th, 1914.—“ Francis Bacon.”

By Mr. William S. Smedley.

Nov. 24th, 1914.—“ Recent Excavations in Verulam.”

By the Rev. C. V. Bicknell, M.A.

Jan. 21st, 1915.—“ Manners and Customs in the Good Old Times.”

By Mr. Maberley Phillips, F.S.A.

Feb. 25th, 1915.—“ Some East Herts Domestic Architecture.”

By Mr. A. Whitford Anderson, A.R.I.B.A.

March 26th, 1915.—“ Gloucester, Salisbury, Winchester and Oxford Cathedrals.”

By Mr. C. E. Keyser, F.S.A.

Nov. 2nd, 1915.—“ The History of the Printed Book.”

By Miss Francis Commin.

Feb. 26th, 1916.—“ Castles and Siege Warfare in the Middle Ages.”

March 11th, 1916.—“ Castles and Siege Warfare in the Middle Ages ” (second part).

Both by Mr. R. P. Howgrave-Graham, M.I.C.E.

Feb. 10th, 1917.—“ A Fifteenth Century Primer, or Book of Religious Instruction, written at St. Albans, the property of the Rev. Canon G. H. P. Glossop.”

By the Rev. Father Field, D.D.

“ Roman Coins from the Site of Verulam.”

By Mr. F. S. Salisbury, M.A.

- March 24th, 1917.—“Is St. Michael's Church the Basilica of Verulamium? The Evidence for and against.”
By Mr. C. H. Ashdown, F.R.G.S., F.C.S.
- At this time there was great difficulty in obtaining lecturers, and it was consequently arranged for the Society to make a donation to the County Museum which would entitle Members to attend the lectures given there.
- March 25th, 1919.—“The Military Garb of our Ancestors,”
By Mr. C. H. Ashdown, F.R.G.S., F.C.S.
- April 10th, 1919.—“The Development of Architecture in Spain.”
By Mr. Edgar T. A. Wigram, B.A., A.R.I.B.A.
- Jan. 20th, 1920.—“The Adventures of a Chimney Piece now at North Mimms Park,” and “Nicholas Stone and the Baldwin Monument at Great Berkhamsted Church.”
Both by Mr. H. C. Andrews, M.A.
- “Miracle Plays in the Mediæval Period.”
By the Rev. Prebendary F. A. Hibbert, M.A.
- Feb. 3rd, 1920.—“The Monuments of Ancient Egypt.”
By Mr. Eric A. Jones.
- Feb. 26th, 1920.—“An Undiscovered Antiquity: St. Michael's Church, St. Albans.”
By Mr. H. V. Moulesworth-Roberts.
- “An Introduction to the Art of Wood Engraving.”
By Mr. G. E. Bullen, F.R.Hist.S.
- March 23rd, 1920.—“Dalmatia.”
By Mr. Edgar T. A. Wigram, B.A., A.R.I.B.A.
- Nov. 13th, 1920. “Mycenæ.”
By Mr. A. J. B. Wace, M.A.
- Jan. 29th, 1921.—“Old Village Life.”
By the Rev. Prebendary F. A. Hibbert, M.A.
- Feb. 12th, 1921.—“Egypt.”
By Mr. Eric A. Jones.
- Feb. 26th, 1921.—“The Rose of Raby, or the Life and Times of Proud Cis.”
By Mrs. C. H. Ashdown.
- March 12th, 1921.—“Gibraltar.”
By Mr. Eric A. Jones.
- March 19th, 1921.—“Dykes,”
By Mr. Albany F. Major, O.B.E.
- “Fronto.”
By Miss E. Archibald, M.A.
- Nov. 16th, 1921.—“The Tombs of the Valley of the Kings.”
By Mr. Eric A. Jones.
- Jan. 24th, 1922.—“A Trip across Canada: Atlantic to Pacific.”
By Mr. A. J. David, K.C., F.R.G.S.

Feb. 7th, 1922.—“Some Notes on Hertfordshire Churches, with special reference to Pre-Conquest Remains,”
By Mr. A. Whitford Anderson, A.R.I.B.A.

Feb. 21st, 1922.—“The Chapter House and Infirmary Excavations at St. Albans Monastery.”
By Sir Edgar T. A. Wigram, Bart., B.A., A.R.I.B.A.

March 7th, 1922.—“The Life, Work, and Influence of Inigo Jones.”
By Mr. F. Norman Reckitt, M.A.

March 22nd, 1922.—“Japan.”
By Mr. C. H. Osborne, J.P.

April 6th, 1922.—“Mediæval Fortresses.”
By Mr. C. H. Ashdown, F.R.G.S., F.C.S.

(For Lectures after this date, see the Reports of the President and the Director in this volume.)

In addition to the above our late Hon. Secretary, Mr. C. H. Ashdown, delivered several courses of descriptive architectural addresses in the Abbey and St. Peter's, St. Michael's and St. Stephen's Churches, while on December 9th, 1921, Mrs. C. H. Ashdown gave a Costume Lecture entitled “The Dress of our Ancestors,” at a *Conversazione* at the Town Hall, when the members were very kindly entertained by the late Alderman Faulkner and Mrs. Faulkner.

The Excursions which have taken place since the publication of the previous volume are as under :—

Feb. 9th, 1915.—Sandridge Church.

May 15th, 1915.—Burston Manor Farm and Tithe Barn at St. Stephen's.

June 1st, 1915.—Cheshunt, Theobald's Park and Enfield.

July 17th, 1915.—Great Nast Hyde.

June 7th, 1916.—Tower of London.

(In 1917 and 1918 there were no Excursions, owing to increased difficulties due to the War.)

June 4th, 1919.—Sandridge Church.

June 17th, 1919.—Flamstead Church.

July 1st, 1919.—Berkhamsted and The Castle.

July 15th, 1919.—Verulamium.

Aug. 12th, 1919.—Sandridgebury.

May 25th, 1920.—Hatfield House.

June 5th, 1920.—Excavations at Orchard House.

June 15th, 1920.—Wheathampstead.

June 22nd, 1920.—London Churches.

July 3rd, 1920.—Salisbury Hall.

July 24th, 1920.—Excavations at Orchard House. Paper read by Mr. William Page, F.S.A.

Sept. 30th, 1920.—The Temple, London.

Oct. 21st, 1920.—Chapter House Excavations.

May 3rd, 1921.—Five Old Houses in St. Albans.

May 24th, 1921.—Dunstable, Totternhoe, Eddlesboro, Aldbury, Ashridge and Berkhamsted.

June 14th, 1921.—Penn District, Jordans and Sarratt.

July 5th, 1921.—Kimpton and Hitchin.

July 26th, 1921.—Knebworth House, Welwyn and Digswell.

Aug. 27th, 1921.—Verulamium.

Nov. 5th, 1921.—Mr. Frank O. Salisbury's Studio.

(Excursions after this date will be found in the President's and the Director's Reports in this volume.)

In 1920 extensive excavations were carried out in the Abbey Orchard and in the Deanery grounds; the cost of these was considerable, and was met by grants from the Society's funds and by donations received from members and their friends. The results are not detailed here, as they are described in later pages of this book.

In 1921 the Headquarters of the Society, together with the Library, were removed from the County Museum to the Reference Room of the Municipal Library, and the first General Meeting to be held there was that of November 16th in that year.

In the same year a new lease of the Clock Tower was granted to the Society by the Corporation, and the building continues to attract numerous visitors.

In 1922 the repair of the Bacon Monument was undertaken, particulars of which will be found in the Director's article in this volume.

In 1923 new rules were drawn up by the President, approved by the Council, and confirmed by the Annual General Meeting on February 20th. Copies have been sent to all Members. In the same year Sir Edgar Wigram kindly accepted the office of Director of the Society, in which he has long taken a keen interest and to which he has rendered, and continues to render, invaluable help.

It is interesting to note that this will be the eightieth year of our history and we look forward to many more years of prosperity.

(Mrs.) C. H. ASHDOWN.

Honorary Librarian's Report, February, 1924.

When our Library was removed from the County Museum to the Municipal Library in 1921 the books were re-arranged and a new catalogue compiled. It was found that we had a large number of volumes of Transactions dating back many years, but which are at least as interesting to-day as when they were first published; in fact, many of them contain information which would now be difficult to obtain from any other source.

The Council therefore decided that the surplus copies should be offered to Members at nominal prices and should also be placed on sale at the Clock Tower. This scheme has met with considerable success, and we have already realised a sum of £9 18s. 1d., while the demand still continues.

Although the Library contains many books of great interest, the total number of volumes is not very large, considering that our Society has been in existence for seventy-nine years, but new purchases are made from time to time, as funds allow, and the Council hopes that Members will give books of architectural, archæological and antiquarian interest as opportunity offers.

As the Library is now easily accessible, the Librarian trusts that Members will make full use of it, and will communicate with her as to any books which they are able to present, or will make suggestions as to new purchases or any other matters likely to lead to the improvement of the collection. Members of the Society are able to borrow books at any time upon application to an official of the Municipal Library.

Among recent gifts are the following :—

Mr. E. N. Wix.

Two volumes of Transactions to complete our set.

Mr. F. Norman Reckitt.

Some Architectural Works of Inigo Jones, by Triggs and Tanner.

Mr. C. E. Jones.

English Architecture from the Conquest to the Reformation, by T. Rickman.

The True Principles of Pointed or Christian Architecture, by A. Welby Pugin.

Ecclesiastical Art in Germany during the Middle Ages, by W. Luebke.

Remains of Prehistoric Age in England, by B. C. A. Windle.

Hermits and Anchorites of England, by R. M. Clay.

Mediæval Hospitals of England, by R. M. Clay.
Churchwardens' Accounts, by J. C. Cox.
Parish Registers of England, by J. C. Cox.
Royal Forests of England, by J. C. Cox.
Early British Trackways, by A. Watkins.
Heraldry, Historical and Popular, by C. Boutell.
Chronicle of Jocelin of Brakelond.
History of Fulk Fitz Warine.
Camden's Britannia (ed. 1695).
Some Account of London, by Thos. Pennant.
Kings' Letters (two vols.).
Recollections of G. Gilbert Scott.
Ancient Law, by H. S. Maine.

Mr. C. E. Jones has also placed on loan in our Library :—

The High Altar Screen in St. Albans Cathedral, by H. H. Gibbs.
The Abbey of St. Alban, by H. J. B. Nicholson.
Stowe's Annales.
Chap Books of the XVIII. Century, by John Ashton.
Amusing Prose Chap Books, by R. H. Cunningham.

ADA JOPLING.

Charles Henry Ashdown.

On the 15th of November, 1922, Charles Henry Ashdown entered into his rest after having undergone a surgical operation. On the 18th of that month his body was laid to rest in the churchyard of St. Stephen's, St. Albans, a large assembly of friends and acquaintances being present, drawn together by their esteem of him, and their sympathy with his widow.

He was born on April 10th, 1856, the son of James Ashdown, of Brighton, and was educated at the Brighton Grammar School. After serving as an Assistant Master at Brighton College, and at the Petworth and Atherstone Grammar Schools, he came to St. Albans in 1886 as Science Master at the St. Albans School, retaining his connection with that School until 1911.

In 1887 he married Miss Emily Jessie Tippetts, of Atherstone, who entered with affectionate interest into his varied activities, and rendered him valuable assistance in all his work.

He was the author of numerous works on historical and antiquarian subjects, and wrote the Libretto and Lyrics for the very successful St. Albans Pageant in 1907, taking an active part in its production, with his wife's co-operation.

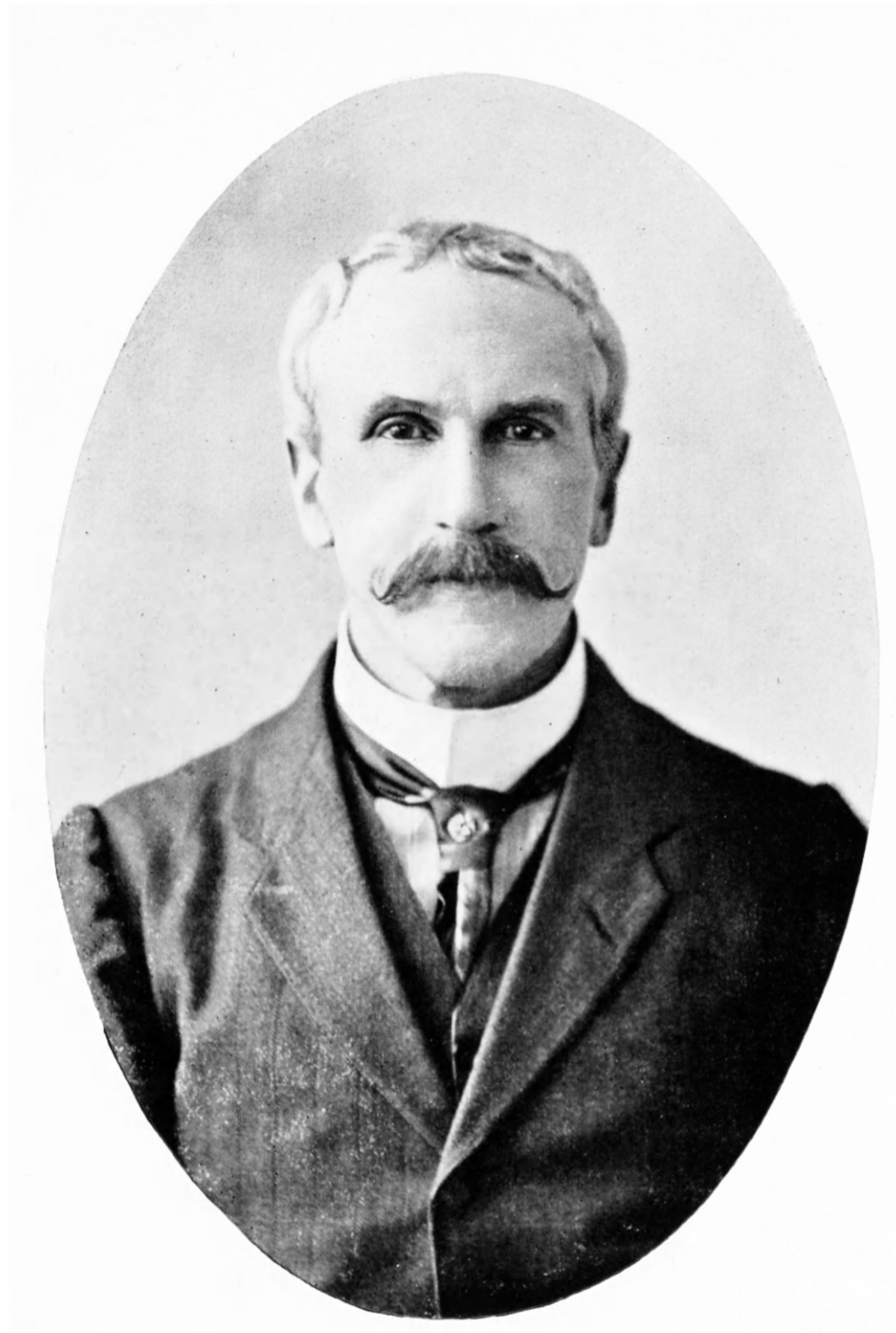
In 1921 he became the General Editor of the "Home Antiquary Series," but died before any work of this series was ready for publication. He was also an official lecturer on the staff of the Selborne Society.

On the 25th of February, 1898, he joined the St. Albans and Herts Architectural and Archæological Society, becoming a member of its Committee (now Council) on April 22nd, 1901, and on May 26th, 1905, was appointed that Society's Honorary Secretary. In that capacity he did much very valuable work, being ably assisted by Mrs. Ashdown.

He will be affectionately and gratefully remembered by the members of the Society, which he served so well in several capacities, for his geniality and courtesy, and for the readiness with which he so freely helped them out of his store of wide reading and varied knowledge.

A white alabaster tablet has been fixed to his memory by members of the Society in St. Stephen's Church, in which he worshipped, and in the churchyard of which his body rests. Both the church and churchyard are of antiquarian interest, making his resting place most suitable for one who occupied himself so much with Archæology. Upon his grave a granite cross is erected, and the quaint lines inscribed upon that monument very well express the gentle character of the man, "He saw no evil, he thought no evil, he spake no evil."

E. J. G.



CHARLES HENRY ASIDOWN, F.R.G.S., F.C.S.

Herbert Robert Wilton-Hall.

Herbert Robert Wilton-Hall, who was a member of this Society for nearly forty years, and served its interests in various ways, entered into rest on February 24th, 1924, being 68 years of age.

He was living in Essendon when he joined this Society, but came to St. Albans in 1895, when he was appointed Head-master of the Abbey Boys' School, and became a well-known figure in this City. His genial manner, and ready response to applications for assistance in matters within his ken, won for him the esteem of those with whom he had to do.

His taste for Architecture and Archæology showed itself in his boyhood, when he frequently visited Westminster Abbey, being fascinated by its architecture and its history. From early manhood he occupied himself much with architectural study and archæological research.

From 1903 to 1915 he was our Hon. Librarian, and articles written by him, and published in our Transactions, include Notes and Memoranda on some Hertfordshire Churches at the beginning of the 19th Century;—Memoirs of Dr. Richard Lee, of Hatfield, and of his son, Richard Lee, of Essendon;—Sandridge Parish Accounts;—A Review of the History of this Society from 1845 to 1905.

He also compiled for the Society Records of the old Arch-deaconry of St. Albans from 1575 to 1637, a work entailing great labour and research.

Our Library contains two manuscript volumes by him, which are models of penmanship, viz., Memorials in Hatfield Churchyard, and Transcript of Hatfield Parish Registers, 1652 to 1717.

Shortly before his death he handed over to our President notes on some Hertfordshire and London Churches, in the hope that they might be found useful for our Library.

He also did valuable work for St. Albans Abbey, as Assistant Librarian of the Abbey, and Assistant Clerk of the Cathedral Chapter.

For some months he suffered increasing weakness; the end of his earthly life came very gradually, and he passed away very peacefully. He died, as he had lived, a devout and well-instructed son of the English Church.

His body was laid to rest in the Essendon Churchyard on February 28th, 1924.

E. J. G.
